

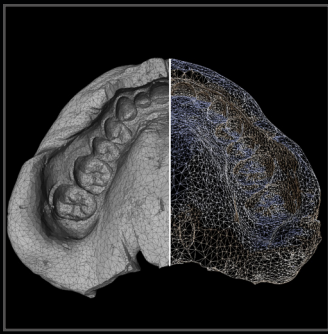


2D Digital X-ray and 3D Computed Tomography

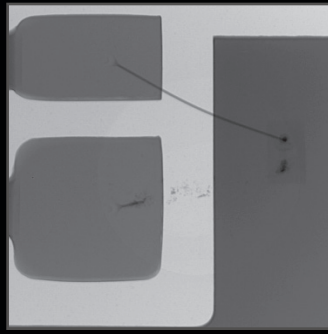


X25

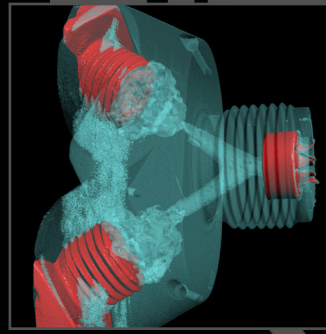
The X25 is a sub-micron digital radiography and computed tomography system designed for ultra-high resolution imaging and unparalleled measurement accuracy. The compact cabinet fits through a standard 35" wide doorway and houses a precise five-axis manipulator with vibration isolation system. The X25 is ideal for small to medium sized objects, making it the perfect choice for electronics inspection, R&D and laboratories. All systems are manufactured to meet all state and federal radiation safety regulations.



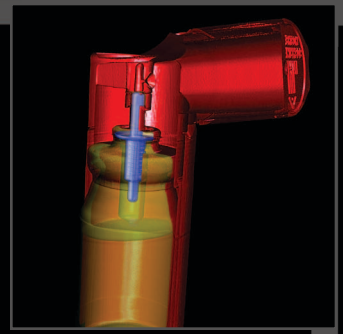
DENTAL



ELECTRONICS



AEROSPACE



PHARMACEUTICAL

SPECIFICATIONS

OVERALL

- Ideal for submicron X-ray and CT applications
- X-ray Energies from 10kV-160kV
- Geometric Magnification: Up to 4000x
- Overall Maximum System Resolution: 0.5 micron

CABINET

- External Dimensions: 73" Wide, 38" Deep, 71" Tall (185.4cm Wide, 96.5cm Deep, 180.3cm Tall)
- Transportable through standard 35" wide doors (removable light curtains)
- Cabinet Features: Cable access port with cover, interior lighting, powered sliding access door(s), leaded glass viewing window, safety light curtains
- Steel/lead/steel construction
- Meets or exceeds all federal and state radiation safety regulations (21 CFR 1020.40)
- Touch screen operation
- Vibration isolation system
- System includes one ergonomic desk and chair

MANIPULATOR

- Maximum Sample Weight: 25lbs (11kg)
- Scan Travel (customization available): Vertical = 9" (228.6mm), Horizontal = 6" (152.4mm), Z axis (source to detector) = 39.5" (1003.3mm), Rotation = 360° continuous
- Part Manipulation Control:
 - All drives variable speed joystick controlled
 - Each axis is independently controlled

- Control-X: Programmable CNC controlled automated scanning with automatic image processing and archiving capabilities

X-RAY SOURCE

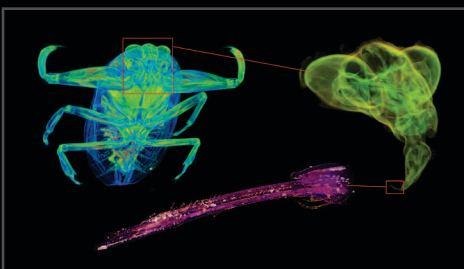
- Voltage Range: 10kV-160kV
- Minimum Focal Spot Size: 0.5 micron
- X-ray Tube Types: Nano-focus, Micro-focus, Open or Sealed, Transmission

X-RAY DETECTOR

- Digital X-ray Detector Types: Flat Panel (DDA), Linear Diode Array (LDA)
- Grade Options: Standard or CT Premium, 14bit or 16bit
- Detector Size: Up to 9" x 11" (228mm x 279mm)
- Characterized to ASTM E2597 Standard

X-VIEW SOFTWARE

- Comprehensive acquisition, processing and archival program with user-friendly interface
- High performance image processing and measurement functions
- Non-proprietary multiple image format output/input. Diconde compliant
- Automated program functions for fast analysis
- Multiple window interface for display of raw image, processed image, density data, etc.
- Computed Tomography acquisition module
- Optional 3D Computed Tomography calibration, reconstruction and visualization
- Optional 4D Computed Tomography



SUBMICRON RESEARCH

NORTH STAR IMAGING, INC.



An ITW Company

Corporate Headquarters:

19875 S. Diamond Lk. Rd., Ste. 10
Rogers, MN 55374 ♦ USA

+1 763-463-5650 ♦ SALES@4NSI.COM



INSIDE X25

VISIT WWW.4NSI.COM OR WWW.XVIEWCT.COM FOR MORE INFORMATION